

Another Level

February 20, 2012

Leveraged products involve a high level of risk and you can lose more than your original investment. They are not suitable for everyone so please ensure you understand the risks involved and if necessary please obtain investment advice from a financial adviser before investing. This report is not a personal recommendation and does not take into account your personal circumstances or appetite for risk.

Technical Observation 1

Barclays

Time: 11.15am

- **BARC** in 3-year downtrend. Recently rallied back to prior breakdown at 250p in July 2011
- **Support** possible at prior lows around 230p
- **Resistance** possible around current levels, thereafter 320p
- **Last featured** in Another level: **8-Feb-2012**



Important: The information provided above does not constitute advice or opinion and must only be regarded as technical observations.

Share Perf %:	1wk	1m	6m	1yr	2yr	5yr
	7.34	12.83	51.89	-23.77	-19.41	-65.4

Need help with Support & Resistance? [Click](#)

Our research is produced by Accendo Markets Limited. Research produced and disseminated by Accendo Markets is classified as non-independent research, and is therefore a marketing communication. Accendo Markets research has not been prepared in accordance with legal requirements designed to promote its independence and may not comply with FSA guidelines to prevent conflicts of interest and is not subject to any prohibition on dealing ahead of the dissemination of research. As such, this research does not constitute a personal recommendation or offer to enter into a transaction or an investment, and is produced and distributed for information purposes only. Accendo Markets considers information contained within the research to be valid when published, and gives no warranty as to the investments referred to in this material. The income from the investments referred to may go down as well as up, and investors may realise losses on investments. The past performance of a particular investment is not necessarily a guide to its future performance. Prepared by Michael van Dulken, Analyst

Another Level

February 20, 2012

Leveraged products involve a high level of risk and you can lose more than your original investment. They are not suitable for everyone so please ensure you understand the risks involved and if necessary please obtain investment advice from a financial adviser before investing. This report is not a personal recommendation and does not take into account your personal circumstances or appetite for risk.

Technical Observation 2

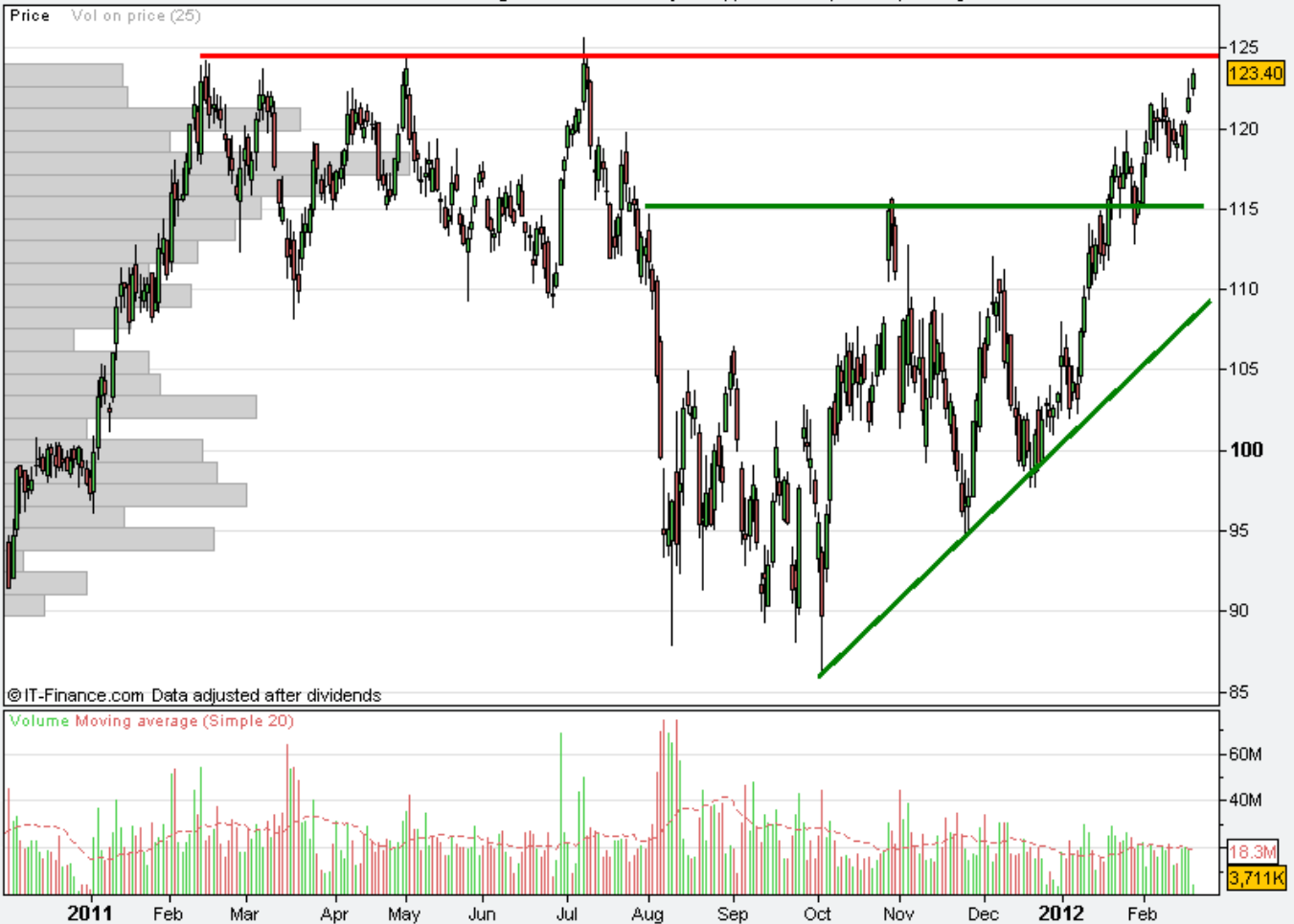
Legal & General

Time: 11.15am

- **LGEN** in 6-month uptrend
- **Support** possible again at breakout through 115p
- **Resistance** possible at prior highs of 125p
- **Last featured** in Another level: 20-Jan-2012

IT-Finance.com

LGEN - Legal & General Group Plc (-) 123.40 (+1.31%) Daily 10:55



Important: The information provided above does not constitute advice or opinion and must only be regarded as technical observations.

Share	1wk	1m	6m	1yr	2yr	5yr
Perf %:	4.05	5.56	18.88	2.41	62.26	-19.74

Need help with Support & Resistance? [Click](#)

Another Level

February 20, 2012

Leveraged products involve a high level of risk and you can lose more than your original investment. They are not suitable for everyone so please ensure you understand the risks involved and if necessary please obtain investment advice from a financial adviser before investing. This report is not a personal recommendation and does not take into account your personal circumstances or appetite for risk.

Technical Observation 3

Marks & Spencer

Time: 11.50am

- **MKS** broken out from 6-month sideways trend
- **Support** possible at recent breakout around 340p
- **Resistance** at prior highs around 390p, thereafter 400p (round number)
- **Last featured** in Another level: **7-Feb-2012**

IT-Finance.com

MKS - Marks & Spencer Group Plc (-) 356.40 (+1.14%) Daily 11:04



Important: The information provided above does not constitute advice or opinion and must only be regarded as technical observations.

Share	1wk	1m	6m	1yr	2yr	5yr
Perf %:	1.74	6.45	15.16	-0.34	8.5	-46.58

Need help with Support & Resistance? [Click](#)

Another Level

February 20, 2012

Leveraged products involve a high level of risk and you can lose more than your original investment. They are not suitable for everyone so please ensure you understand the risks involved and if necessary please obtain investment advice from a financial adviser before investing. This report is not a personal recommendation and does not take into account your personal circumstances or appetite for risk.

Technical Observation 4

National Grid

Time: 11.15am

- **NG** in 2-year uptrend
- **Support** possible at rising lows around 610p
- **Resistance** possible again at recent highs around 650p
- **Last featured** in Another level: **8-Feb-12**

IT-Finance.com

NG - National Grid Plc (-) 641.50 (-0.62%) Daily 11:08



Important: The information provided above does not constitute advice or opinion and must only be regarded as technical observations.

Share Perf %:	1wk	1m	6m	1yr	2yr	5yr
	1.46	3.76	4.69	11.71	13.12	-3.54

Need help with Support & Resistance? [Click](#)